



Thin Feather-Weight *Daytime Guard*

DAYTIME LAMINATED THIN-SPLINTS

The thin polypropylene-ethylene copolymer stent is formed over the digital model with acrylic added to generate the occlusion. This feather-weight day-guard is fabricated on the lower arch.

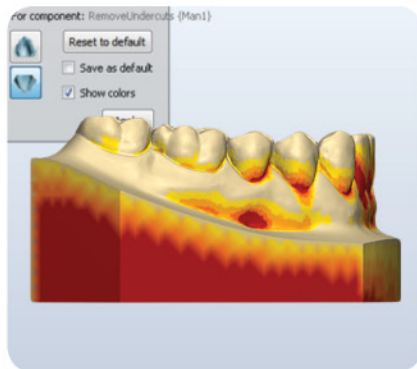


THIN ESTHETIC design for daytime wear

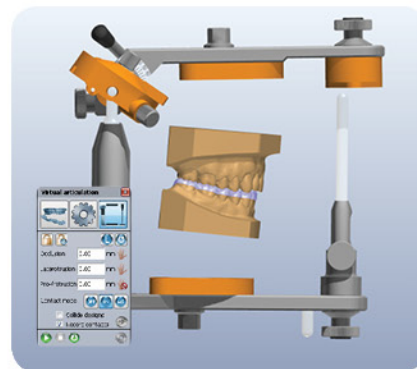
PRECISION fitting thin copolymer stent

LIGHT-WEIGHT and reduced bulk for speech

RETENTIVE and flexible material for comfort



Virtual Survey and Blockout



Virtual Articulation

PROTEC
DENTAL LABORATORIES LTD.



34 East 2nd Avenue
Vancouver, BC
Canada, V5T 1B1
Tel: 604.873.8000
Toll Free: 800.663.5488
Fax: 604.873.8527

Crown & Bridge • Dentures • Orthodontics
www.protec dental.com info@protec dental.com

